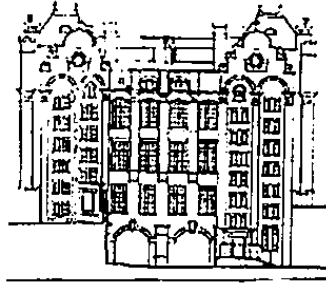


**New End Primary School**  
**Streatley Place, London NW3 1HU**  
**020 7431 0961**



## **New End Home-School Agreement**

### **2014-2015**

Our home–school agreement sets out the expectations for children, parents and carers and the school.

An effective home – school partnership is the key to a child’s success and happiness in school. We want all New End children to be happy and enjoying their learning.

Please take the time to read this agreement and return the signed copy to school. Once a copy has been taken for our records, the original will be returned to you.

Thank you for your ongoing co-operation.

### **The School's Agreement**

The school will try to:

- Give children access to the whole curriculum.
- Provide a wide range of activities in school, meet children’s’ varying needs and abilities and help children achieve their best in all subjects and other aspects of school life.
- Provide a welcoming, happy and safe environment and atmosphere, including for all new children.
- Ensure children take part in school life and decision making.
- Promote a sense of responsibility, independence and thoughtfulness of others.
- Communicate regularly about achievement, progress and general school matters.
- Set homework regularly, as detailed in the school's Homework policy.
- Treat children fairly and with respect, regardless of race, gender and ability, and value difference.
- Value children’s’ work and give them a sense of pride through display.
- Provide appropriate opportunities for learning through play which can be self or teacher-directed.
- Welcome and value the involvement of parents/carers in children's learning.

Signed .....  
(Headteacher)

Signed .....  
(Chair of Governors)

## **The Parent's or Carer's Agreement**

I / we will try to:

- Support the educational aims of the school.
- Uphold the Behaviour policy of the school.
- Take an active role in the partnership between home and school.
- Ensure the school has an up-to-date emergency contact telephone number/address.
- Ensure my child gets adequate sleep and a good breakfast so they come to school ready to learn.
- Get my child to school on time every day and pick my child up from school on time every day.
- Try to walk, cycle, scooter or use public transport to get to and from school as often as possible.
- Avoid holidays during term time.
- Help my child to remember all necessary equipment.
- Help my child to do all homework set and give it in on time.
- Maintain a balance of out of school activities with my child (e.g.: a balance of computer / TV time with other activities)
- Maintain communication with teachers.
- Attend parent-teacher interviews about my child's progress at school.
- Read all letters sent home.
- Take a full and active role in any policy consultations.
- Support NESAs and its fund-raising activities.

Signed .....

## **The Child's Agreement**

I will try to:

- Follow the school rules and take responsibility.
- Be honest and tell the truth.
- Do my best with all my work.
- Be helpful and caring towards others and respect their culture and religion.
- Listen to and speak to adults and other children with respect.
- Respect my own and others' property and wear appropriate clothing to school.
- Keep the school tidy and help to save the world's resources by recycling and saving energy and water.
- Move around the school sensibly, safely and responsibly (e.g. keep to the rules on the stairs).
- Make sure that all letters get taken home.
- Help new children in school to settle in.
- Bring all necessary equipment (e.g. PE kit), homework and permission slips etc. to school on the correct day.
- Take responsibility to bring in a healthy packed lunch and mid-morning snack.
- Try to walk, cycle, scooter or use public transport to get to and from school as often as possible.

Signed .....